

FOR LEASE OR SALE



INDUSTRIAL SPACE, 8,000 - 40,000 SF +/-, GRADE & DOCK HIGH
ALSO AVAILABLE, OPEN STORAGE/LAND LEASE AREA: 3.31 ACRES +/-
2451 WEST NEW YORK AVE, DELAND, FL, 32720

HAS 3 Phase Power, 277/480V; Est 400 Amps
PARKING: 32 Spots +/- or .789 per 1,000 SF

Access: from and to
all directions of travel
on SR 44.

MUNI: Volusia County
ZONING: I-1
FLU: Industrial

Scott Garrett

BOSS Commercial Real Estate
Licensed Commercial Real Estate Broker

Cell: 407-733-8159

Fax: 321-549-6269

Scott@BossCRE.com

www.BossCRE.com

FOR SALE PRICE:
\$5,475,000

PROPERTY HIGHLIGHTS

HAS 3 Phase Power, 277/480V with Est 400 Amps

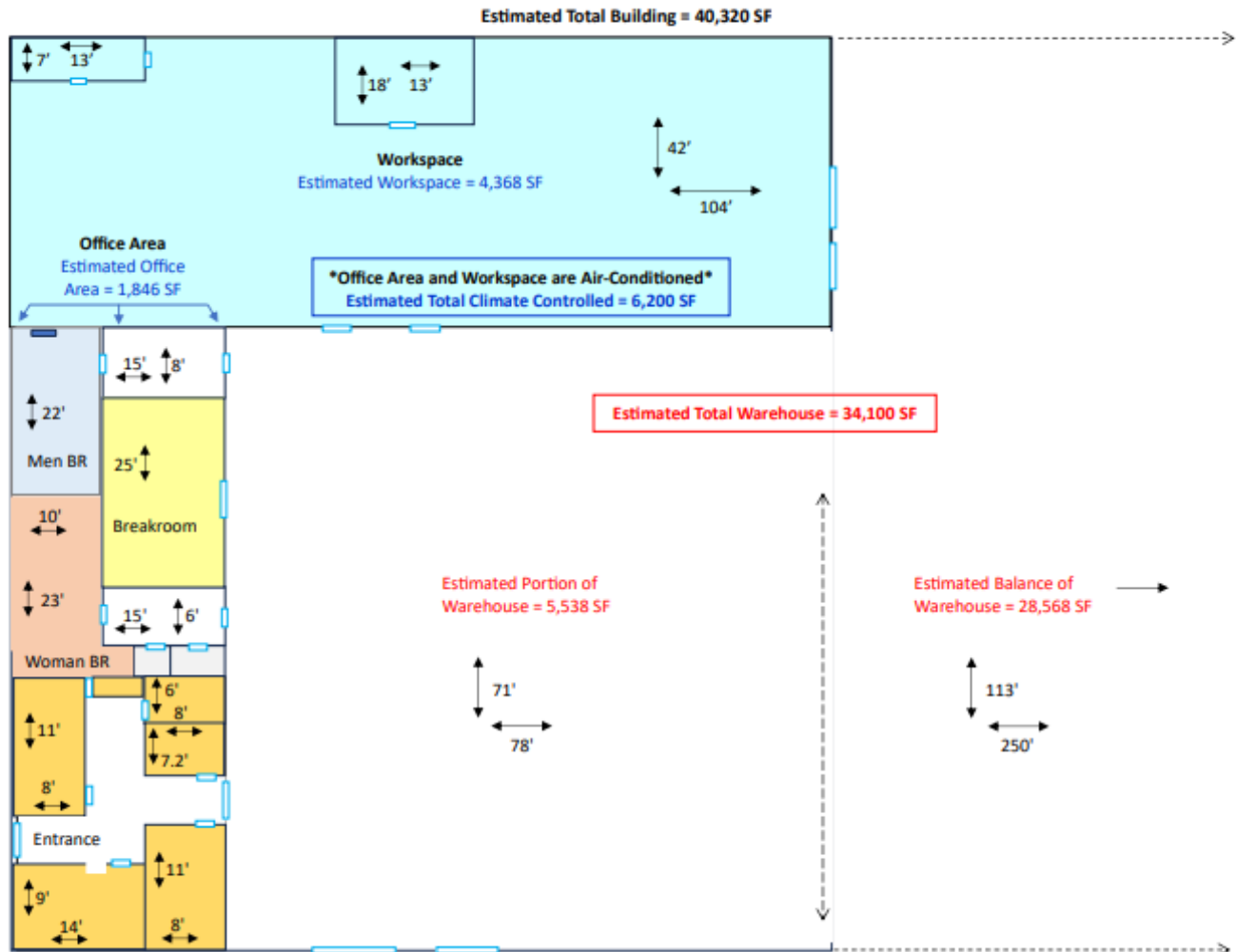
- **Total Building:** 40,320 SF Under Air = 6,200 SF +/-
- **Available Space:** 8,000 - 40,000 +/- (See Page 3)
- **16 FT Peak, 13 FT Eave Bldg Dimension:** 120' D x 336' W
- **UNDER AIR Office Area** = 1,846 SF **Workspace** = 4,368 SF
- **Dock High, Rollup Doors:** 3 Grade 25' W & 3 Dock 8' W
- **Columns span East/West length of bldg, 26' separation**
- **Nearby SR 44 Frontage:** just under 700 linear FT +/-
- **Close to:** I-4, I-95, I-75, Florida Turnpike - Anywhere
- **Lease Rate:** SEE PAGE 3 **\$9.99 - \$13.99** **Lease Rate Entire Bldg: \$9.99 PSF NNN** **NNN (NNN Rate = \$2 PSF)**

This information is from sources we deem reliable and is subject to prior sale, lease, withdrawal without notice, or change in prices, rates, or conditions. No representation is made as to the accuracy of any information furnished

FOR LEASE OR SALE



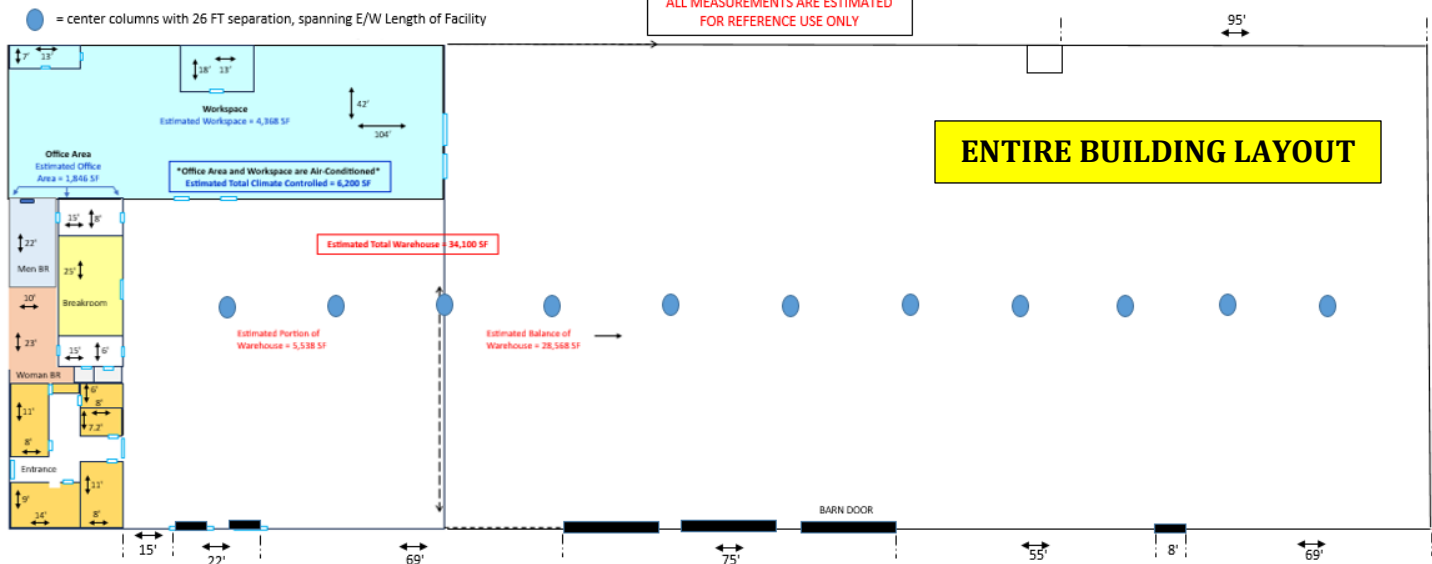
SECTION VIEW: Office, Workroom Areas (under HVAC)



● = center columns with 26 FT separation, spanning E/W Length of Facility

ALL MEASUREMENTS ARE ESTIMATED
FOR REFERENCE USE ONLY

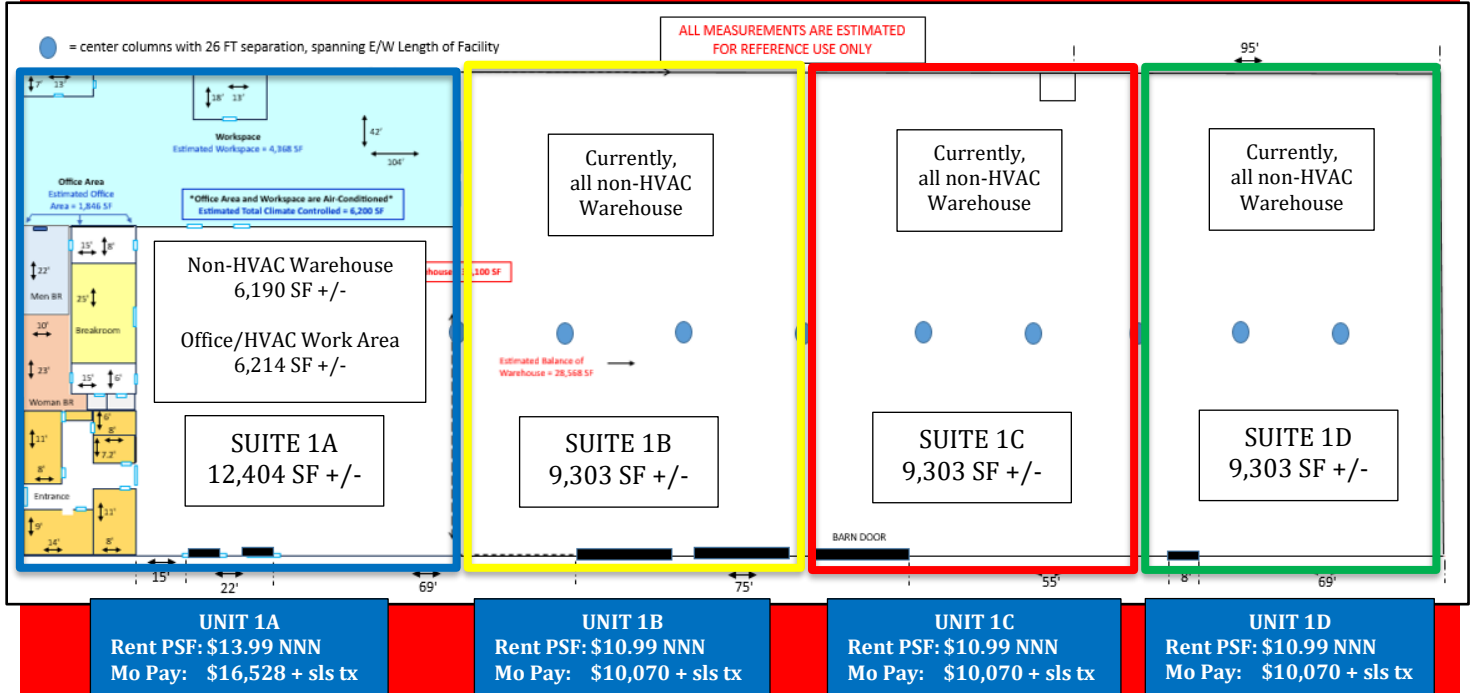
ENTIRE BUILDING LAYOUT



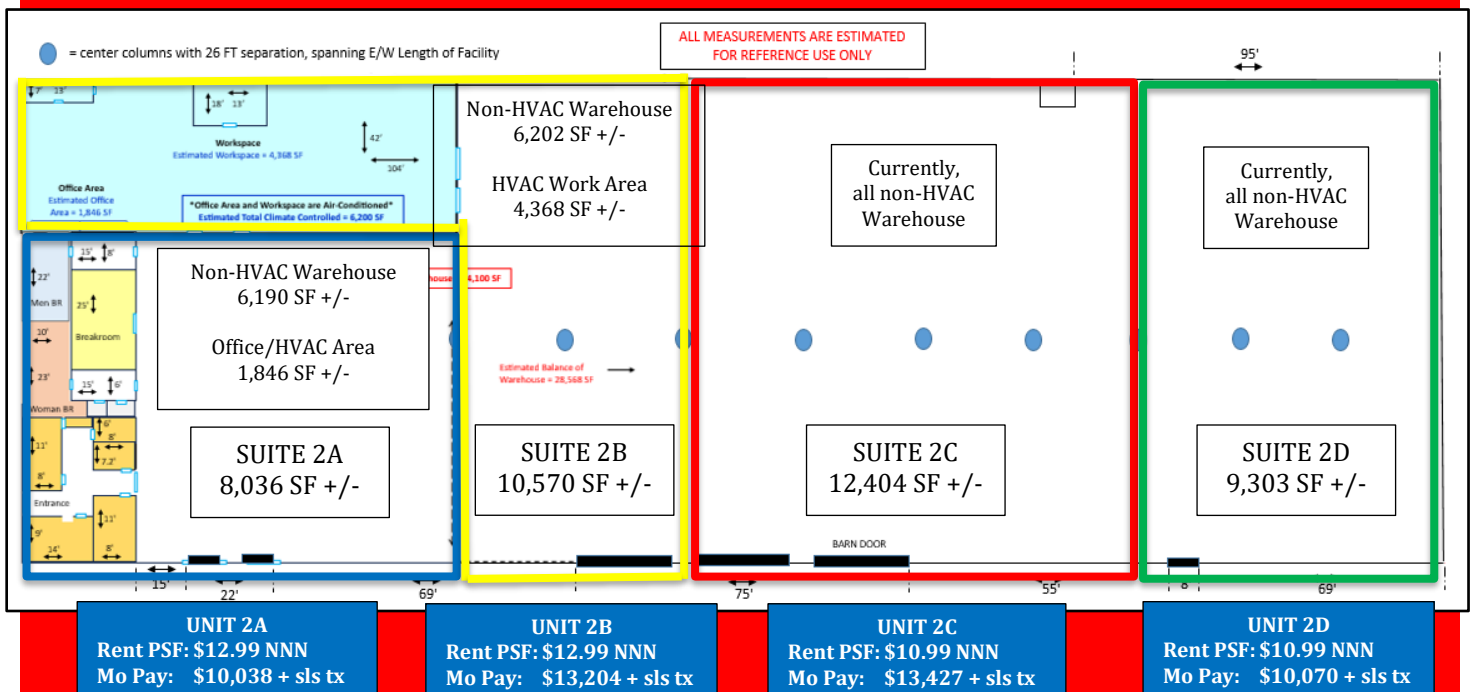
FOR LEASE OR SALE



POTENTIAL UNIT BREAKOUT, FLOORPLAN SCHEME 1



POTENTIAL UNIT BREAKOUT, FLOORPLAN SCHEME 2

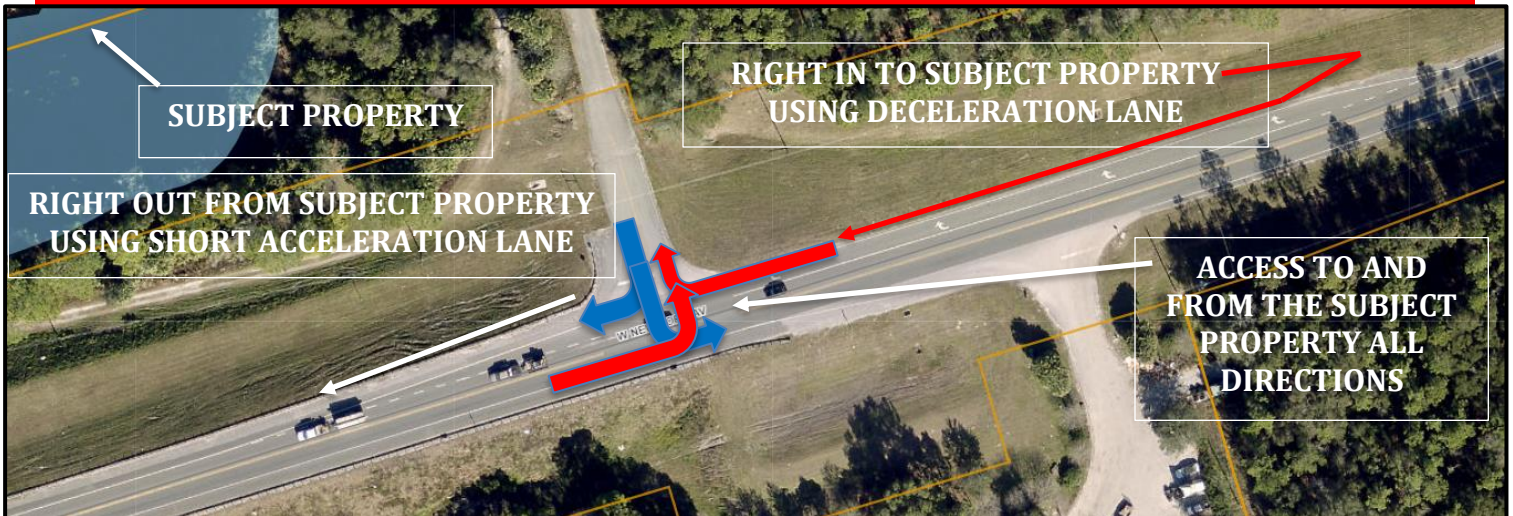


This information is from sources we deem reliable and is subject to prior sale, lease, withdrawal without notice, or change in prices, rates, or conditions. No representation is made as to the accuracy of any information furnished.

FOR LEASE OR SALE



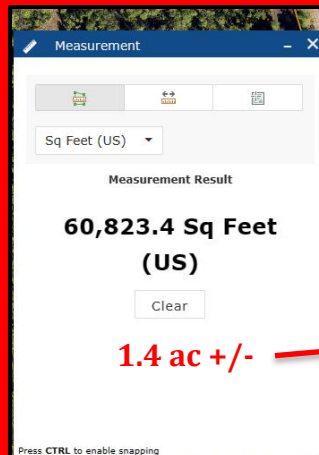
ROADWAY ACCESS



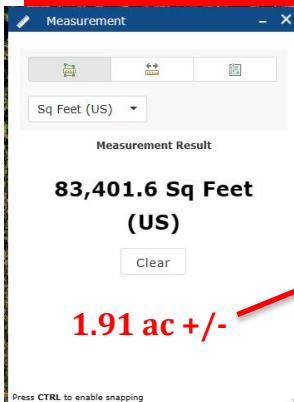
OPEN STORAGE LAND
LEASE AREA(S)
Available Separately

TOTAL AVAILABLE AREA
3.31 ACRES

1 ACRE LEASE PAYMENT
\$60,000 + sales tax
ANNUAL NN LEASE



1.4 ac +/-



1.91 ac +/-

CONTACT

Scott Garrett
Cell: 407.733.8159
Scott@BossCRE.com
www.BossCRE.com

Boss Commercial Real Estate, LLC
Licensed Real Estate Brokers

2211 Saxon Dr
New Smyrna Beach, FL, 32169

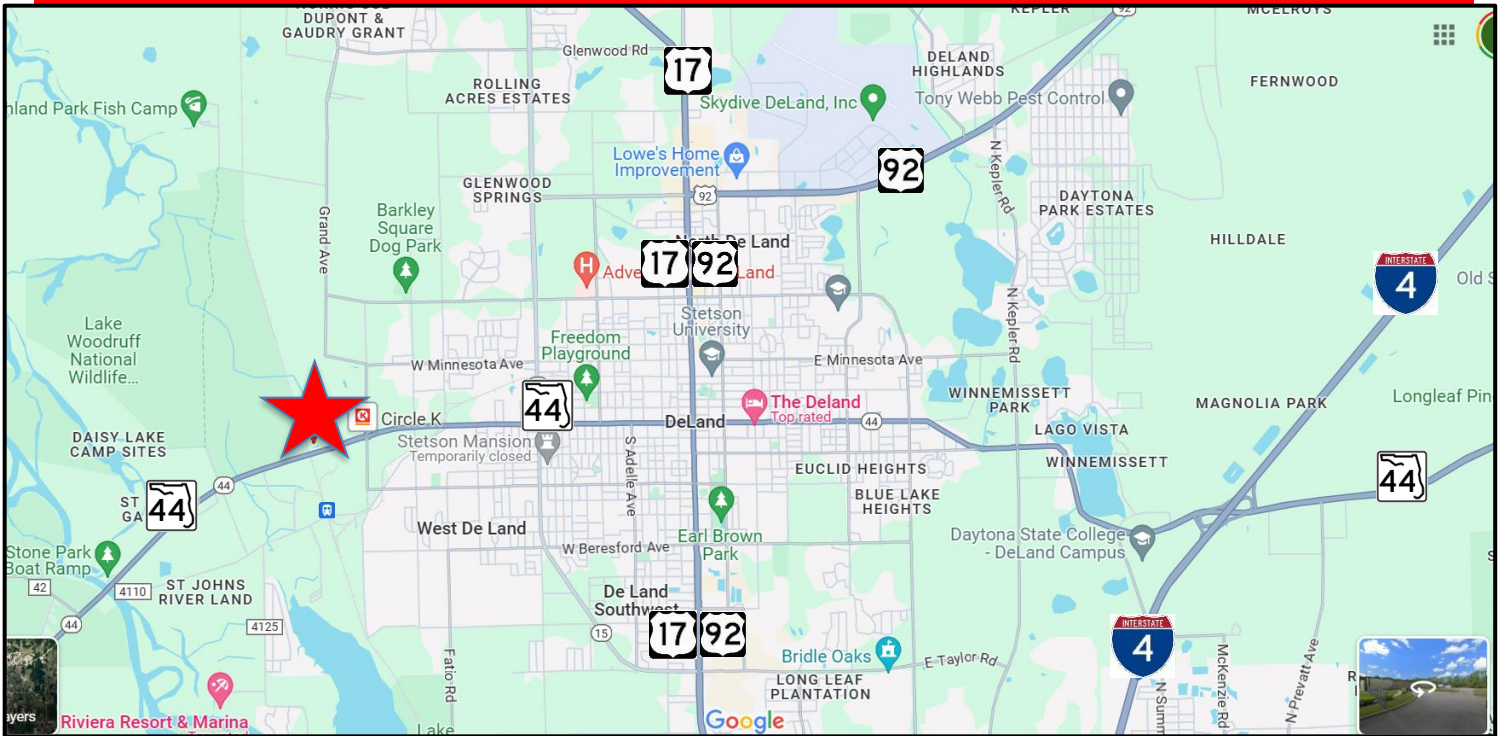
Tel: 407-733-8159
Fax: 321-549-6269
www.BossCRE.com

This information is from sources we deem reliable and is subject to prior sale, lease, withdrawal without notice, or change in prices, rates, or conditions. No representation is made as to the accuracy of any information furnished.

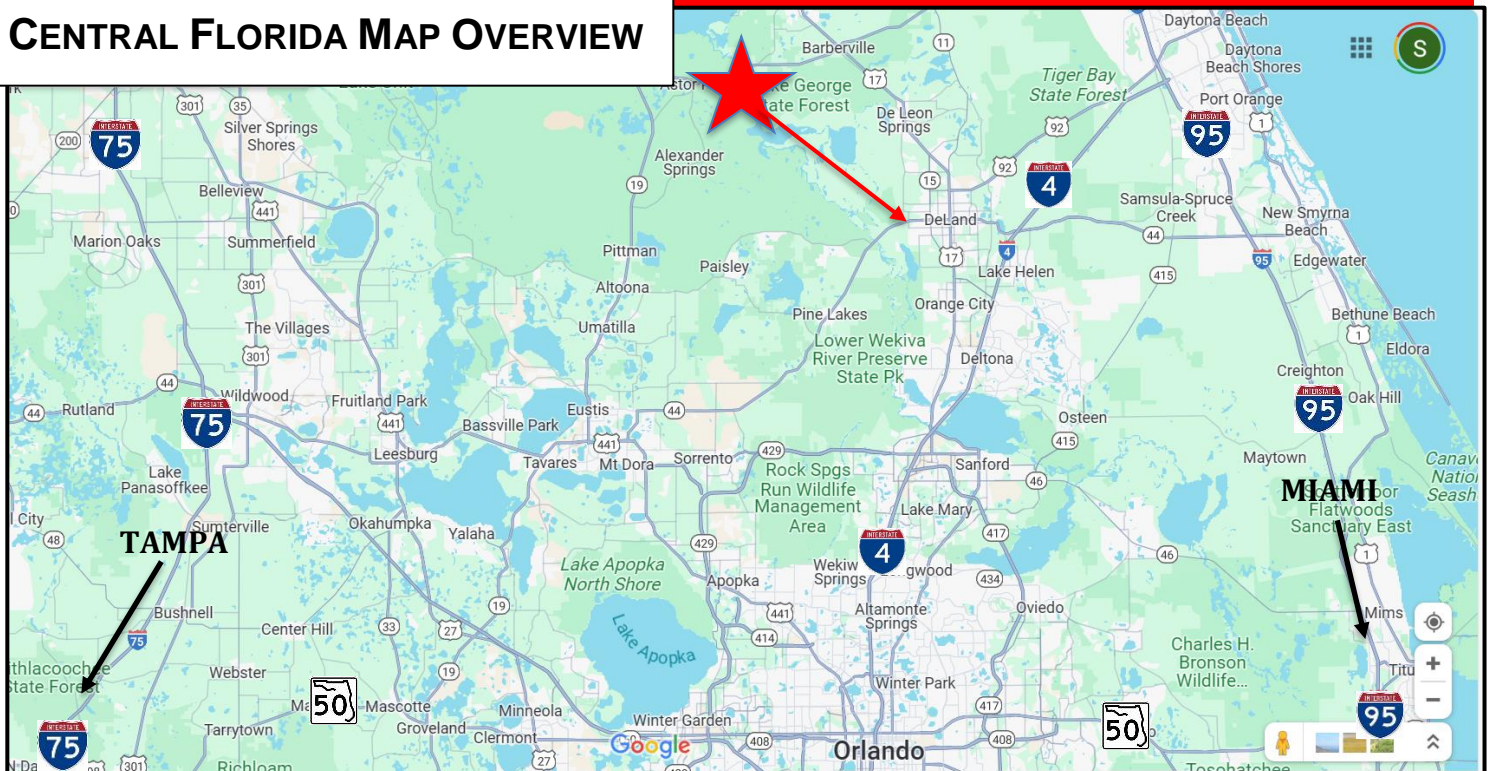
FOR LEASE OR SALE



LOCAL AREA MAP OVERVIEW

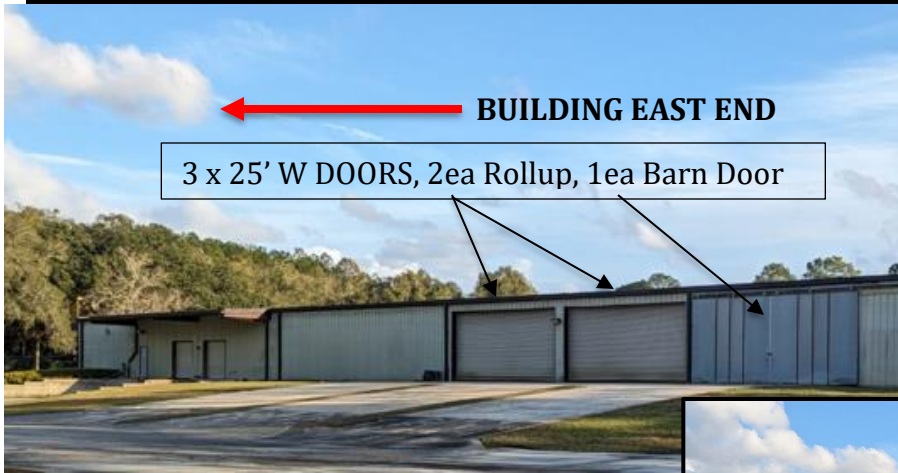


CENTRAL FLORIDA MAP OVERVIEW



This information is from sources we deem reliable and is subject to prior sale, lease, withdrawal without notice, or change in prices, rates, or conditions. No representation is made as to the accuracy of any information furnished.

FOR LEASE OR SALE



BUILDING EAST END

3 x 25' W DOORS, 2ea Rollup, 1ea Barn Door



**INTERIOR
LOOK ROLLUP
DOOR DOCK
HIGH**



INTERIOR VIEW, PORTION



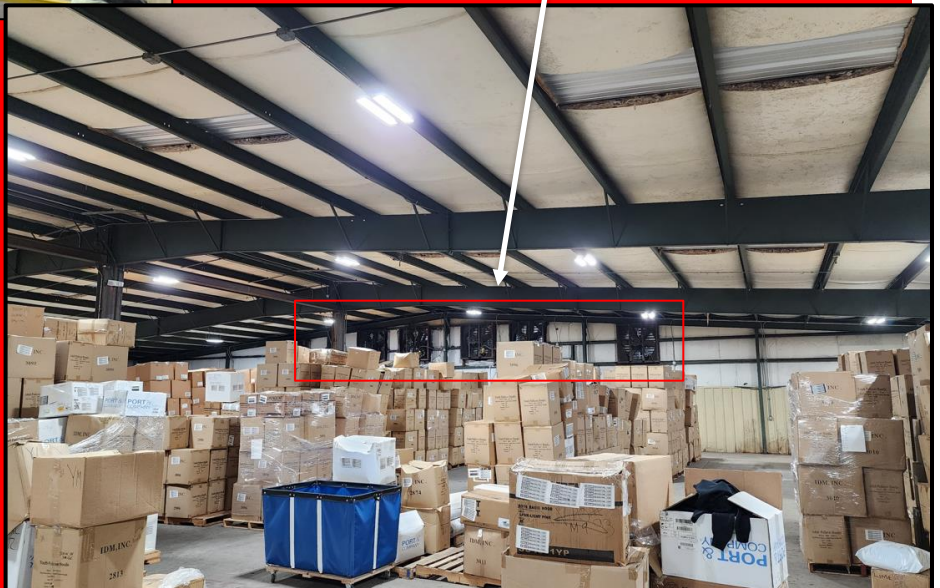
NORTH FACE OF BUILDING

**BUILDING - WEST END
5 EXHAUST FANS-CIRCULATION**

CONTACT

Scott Garrett
Cell: 407.733.8159
Scott@BossCRE.com
www.BossCRE.com

Boss Commercial Real Estate, LLC
Licensed Real Estate Brokers
2211 Saxon Dr
New Smyrna Beach, FL, 32169
Tel: 407-733-8159
Fax: 321-549-6269
www.BossCRE.com



This information is from sources we deem reliable and is subject to prior sale, lease, withdrawal without notice, or change in prices, rates, or conditions. No representation is made as to the accuracy of any information furnished.